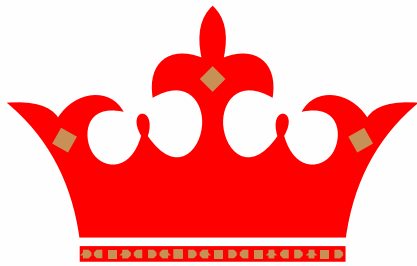


REPORTER
FOOD



Prestige Carpet Industry

Manufacturer of Luxury Carpets & Rugs

We Create Reality from your imaginations

CUSTOM MADE HAND TUFTED & MACHINE MADE

- 01. About Prestige
- 02. Prestige Vision
- 03. Prestige Mission
- 05. Prestige Value
- 09. Prestige Products
- 11. Prestige Markets
- 15. Prestige Sectors
- 18. Prestige Brands
- 20. Our Clients
- 25. Complete Project



Creativity

*We create Reality
from your Immginations*





With the ambition of diversity and uniqueness, prestige carpet started manufacturing in **1989** of luxurious carpets in a country of 4,000 years old, one of the four great ancient civilizations of the world PR CHINA. By inheriting unique values of ancient civilization, a team of highly qualified professionals have been contributing their part last **3** decades asking our clients, what is important to them, when considering which flooring company to work with.




Prestige carpet didn't just ask, we listen and react with 'Five Extraordinary Points' of difference that put us ahead of our competitor and made prestige carpet a standout choice for them. 30 years has been passed, but still have the same passion and drive to succeed us toward the value creation for our prestigious clients.

Prestige Carpet a team of highly qualified professionals joined hands to establish Prestige Carpet having its own carpet manufacturing units of custom made hand tufted carpets, Axminster carpets of high quality, particularly serving the high end customers which need best quality carpet.



Our core values are stable quality and full services, executed the projects like palaces, Luxury Hotels, Mosques, Restaurants, Clubs, Cinemas and Banks all over the world Prestige Carpet has its own **YARN PROCESSING & YARN DYING FACTORY** in order to ensure the quality of yarn and color fastness as per international standards and use the dye stuff imported from Switzerland. With Prestige Carpet we will supply our customer ONE STOP PURCHASE, Starting from DESIGNING, meet the requirements of all clients' taste, SITE MEASUREMENT, measure various site to avoid any size mistakes, LAYOUT PLANS, resolving the wastage at all kinds of site to help customer save the cost, INSTALLATION, supply clients one stop installation services with professional world wide team. Enjoy the life, leave the carpet solutions to our team.

Prestige **VISION**

A close-up photograph of a hand holding a single, clear water droplet just above a small, vibrant green seedling that has just sprouted from dark, rich soil. The background is a soft, out-of-focus green, suggesting a natural, nurturing environment. The lighting is bright and focused on the droplet and the plant, creating a sense of care and growth.

Prestige Carpet Believe in " Client is the reason of our success". Each carpet is design to reflect the vision and need of the client, its about creating unique piece of art. Our vision is to be different , to be unique in this region as a leader of Hand Tufted Carpet, collaborating with the needs of Hospitality, Residential , Government & Corporate sectors with sustainable, economical and creative products and solution.

Prestige MISSION



Bring the excellent innovative experience to our prestigious clients through best innovative craftsmanship and superior quality of products and services. With our professionalism and total dedication we look upon business as a way of life by putting our talent to be best. To build a place where innovative ideas come true in the shape of a unique piece of art which creates value and inner peace of client's investment.

Prestige **VALUES**

1 Creativity- Beyond the limits

" Be ready to create your master piece with us " because " Strength lies in difference, not in similarities " , lets differentiate with us . Allow yourselves to travel with us in endless world of creativity which has endless possibilities . Because prestige carpet believe " Creativity does not have any competition " we don't believe in competing , we believe in collaboration . So we are not restricted nor bias , prestige always welcome unique ideas from our clients and has passion to make them possible at any cost.



2 Unique Culture

we are all different, which is great because we're all unique, Prestige's culture reside in the hearts and soul of its people. We are closely collaborating with innovative industry over 30 years, we hold ourselves accountable for trust of our clients. Our organization culture is based on these norms, we shared assumptions, values, and beliefs.

3 Prestige Ideology

You are the creator of your own master piece , prestige carpet just assist to make it happen for you . We believe “ Customer is reason of our success ” , and Prestige carpet working hard to increase the success’s reasons. We support our customer directly for innovative ideas. Prestige focus to maintain , courtesy , dignity and respect of our client at any cost .” Prestige carpet create values “



PLAZO VERSACE HOTEL
GUEST BEDROOM

4 Passion of Winning

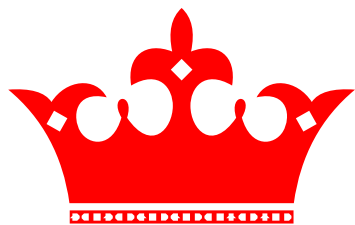
Get in touch with us in the excitement of winning , we pour our passion into our product. Prestige has chose a winning attitude base on unique culture creativity and ideaology , we have been sharing these values and unique strengths with our clients last 30 years. We believe winning is responsibility .

5 Customer Focus

Our customers are reason of our success , we believe customers shape our journey of success “ In Prestige carpet’s DNA , Creativity ,uniqueness , ideology and passion to winning, combination of these ingredients always make impossible to possible for our clients. We focus what our client want and then we deliver it . Prestige carpet build customer experience by design , because we care our customer and they know what they are getting from prestige carpet “ A complete bundle of exchange of values “.

We have earned our reputation by keep trying to do hard things well . We don’t celebrate closing a sale , we celebrate opening a relationship, Prestige always focused on journey to greatness.





PRESTIGE PRODUCT RANGE

1 Custom Made
Hand Tufted Carpet

2 Custom Made
Ax-minister Carpet

3 Viscose and
Bamboo Silk Carpet

4 Custom Made
Mosque Carpet

5 Custom Made
Machine Tufted Carpet

6 Carpet Tiles

There is nothing more luxurious than
Hand Tufted Carpet
in your dream home







CUSTOM HANDTUFT CARPET

Handtufted Carpet is luxury top quality carpet in the carpet range, is recognized as a powerful creative source stretching the way people think about pattern and colour on the floor.



Why Prestige Carpets?

Home is the starting place of love, hope, success and dream. Home where love resides, memories are created, friends always belong and laughter never ends. Prestige Carpet knows the values and importance of your dream home, we know the importance of every single thing in your home. Prestige Hand Tufted carpet contribute to complete your home, Design luxury carpet is one of the essential part of your place, which you can design with us and become a creator of your own idea in shape of carpet "A Unique master piece".

Prestige Carpet is:



Custom Made ✓

Any Design ✓

Limitless Color ✓

Comfortable Under Feet ✓

Underfloor Heating Compatible ✓

Easy Clean/ Maintenance ✓

1 Unrivalled Choice

With Prestige you have an unrivalled choice of long-lasting carpets, Design or Abstract flooring. Through our adaptable collections you can mix and match multilevel patterns or experiment with colors and ideas to give you Endless combinations.

2 Designed In UAE & Made in P.R China

Design talent, innovative manufacturing processes and detailed craftsmanship are at the heart of Prestige Carpet. With a solid reputation for expertise and skill, our luxury flooring is crafted at our specialist factory in Jiangsu, China, and known around the world for its genuine provenance and quality.

3 Durability & Protection

Prestige uses the industry's most technically advanced system. The world-leading Multiple Performance manufacturing System gives underfoot comfort and high resistance to wear and its crowning feature is our 100% New Zealand Wool, High performance wool enhances durability and is easy to clean.

4 Perfect & Define Finish

All Prestige Carpets and tiles are finished with expert craftsmanship without any flaws. Each Carpet is precisely Followed by exact measurement, so when fitted they make a 'Perfect' shape, creating a more defined finish.



Q U A L I T Y

Highly self quality control system, starting from the raw material to the following every step of the production, very small defect will cause a restart work, ERP system are strictly auctioned in the quality control system, even after 5 years, if the complain does exist we can source out the single process. Prestige Carpet has its own yarn processing & yarn dyeing factory in order to ensure the quality of yarn and color fastness as printer national standards and use the dye stuff imported from Switzerland.

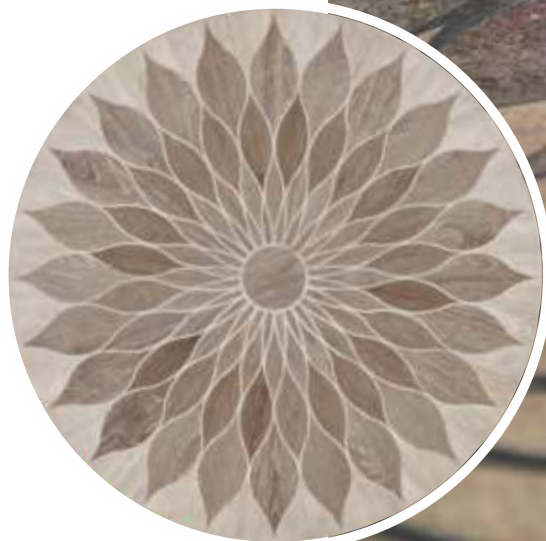
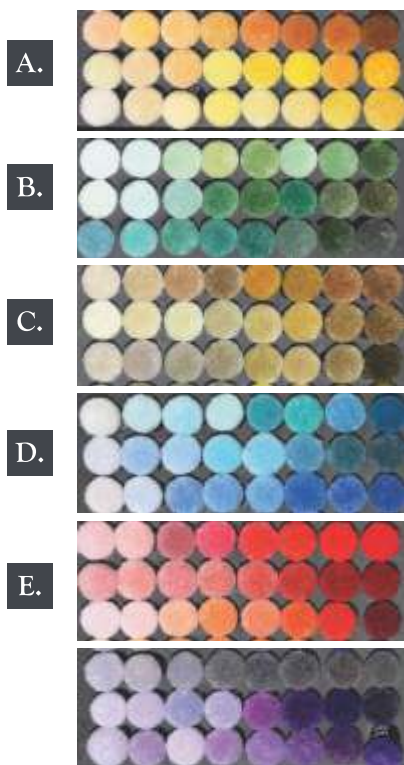
We have religiously devoted ourselves into the research & development, production, marketing and after-sales service of custom made Hand Tufted Carpets as wells as Axminster Carpets. Through our business strategy we aim to be the leading carpet provider across all our markets and different customer segments. Our focus on operational excellence, innovation, geographic and channel expansion and communications enables us to achieve our goals.

Personalise your Prestige

Prestige

We create reality
from your
imagination

Create your look using
Prestige Signature



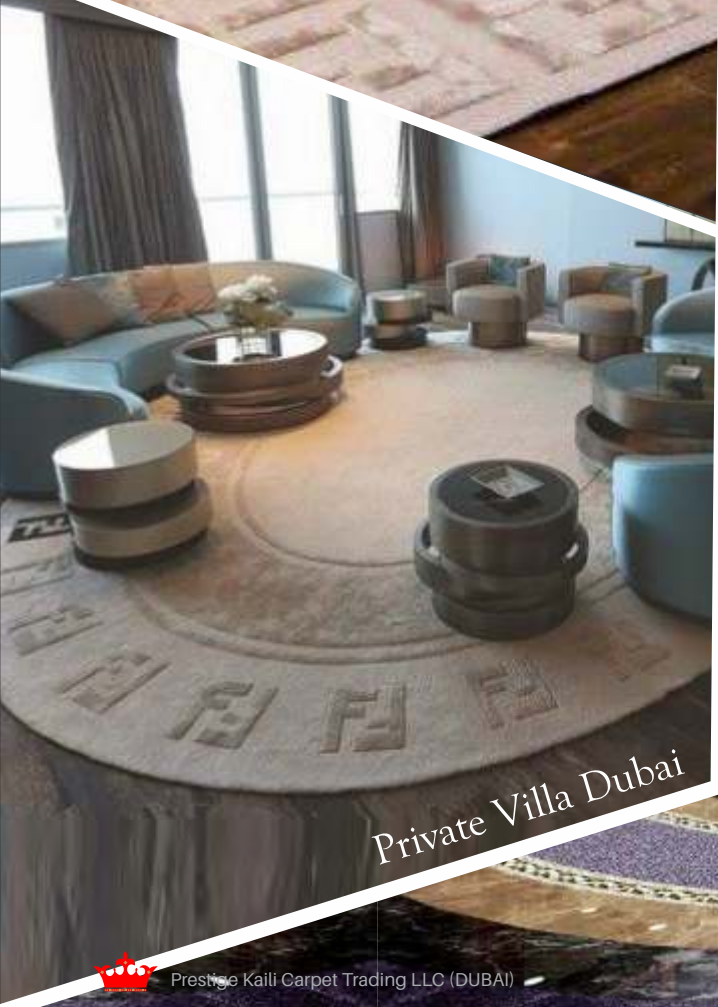
You choose!
Unlimited Colors



Lose Rugs



Plazo Versace



Private Villa Dubai



Why Wool? Newzealand

Warms luxurious carpet raw material comes from a country of 75 million sheep, a carpet which manufacture by super natural fiber meet a very strict set of technical and performance standards for fiber properties such as strength, color fastness, wash ability and level of workmanship is known as NEW ZEALAND WOOL a "SUPERFIBER".



That's why!

Our wool comes from New Zealand farms where sheep are raised on fertile open pastures, in a climate ideally suited to grown clean white wool of exceptional quality and superior color performance during dying process for luxurious wool carpet.




Prestige Kaili Carpet Trading LLC (DUBAI)

HAND TUFTED CARPET

With the Master's handcraft and technoledge, we using cut pile, loop pile, linear, random, graduation,etc to achieve the effect according to original design.

HAND TUFTED

Our custom made hand tufted carpets are a combination of human imagination integrated with state of art computer technology with unlimited design or quality required. We can offer a wide range of designs to choose from, which have been carefully fabricated taking into consideration the latest trends and fashion in the flooring industry. We do not constrain our customers to standard specification and can go up to any complication if required as Wool or Silk of 15 lbs/ sqyd. Designers choose hand tufted carpets as they offer total flexibility in design, pattern, shape, size, texture and the number of colors can all be specified to exactly fulfil each project's special needs. Hand tufted carpet and rugs provide an ultra-luxurious custom look used for the most important public and private spaces lobby areas, promenades, grand staircases and even ballrooms in 5 and 6 star hotels can be fitted with custom rugs produced in seamless widths as 39 feet. Hand tufted carpet can be used as an area rug. Inlaid into hard surfaces or installed wall to wall.

HAND TUFTED CARPET PERFORMANCE

Yarn Count:	1.360 TEX/4 (4Ends Single 340's)
Pile Content:	100 % Virgin New Zealand Wool And/or Genuine Thai Silk
Yarn Treatment:	Mothproof
Finishing:	Cut+Loop and Carved/Uncarved with Concealed Loop
Static (AATCC 134)	> 3.5 KV
Flammability (JISL 1091:1992 Method B)	< 450 or Less (Flamming Mode)
Smokt Fastness (BS 1006 B02:1990)	> 4.0 at 80 Hrs.
Dry Breaking Strength	Not Less 100 lbs per ASTM D 2646
Soil/Stain Protection (AATCC 174)	Built In
Antimicrobial Treatment (AATCC 174)	Built-In Protection
Color Fastness To Ozone	AACC 164





Process

After the design process is completed we send the custom design to one of our skilled and experienced designers to render the design into a scaled production-ready format using the latest computer-aided designing software. Once the design is approved, a sample is manufactured in the design, scale, colour and finish requirements of the clients request. This "prototype" process normally takes 3-4 weeks to complete. After the sample is approved and the order finalized, the next step of the production process is to see the design come to life, which starts by being transferred onto tracing paper. The tracing paper is then projected onto a stencil to the size of the carpet or rug that is to be manufactured, and cut. While the design stencilling is in process, the yarn is being skein dyed to match the approved colours. When the yarn is ready, the canvas stencil is stretched and secured onto a vertical frame where the technicians, using hand-held tufting guns to insert the yarn, colour numbered placements onto the stencil. Once the tufting process is complete, the carpet is sheared and the carving process starts. Carving by experienced technician brings the carpet to life and adds a dimension to the carpet which adds in its aesthetic beauty and value. The carpet is now ready to be shipped out and delivered. No limitations to shape or size



Add Touch Of LUXURY To Your Home



Customized Hand Tufted Carpets have soft and durable surface. When we manufacture handtufted carpets, clients have the ability to choose from a wide variety of surface options and finishes that will suit individual style and design aesthetics. Some surface options include cut-pile, loop pile or a combination of the two. Among some of our finishing techniques are random shearing, carving, bevelling, recessing and embossing, which may be applied to these surfaces, giving hand tufted carpets and rugs a touch of elegance. A combination of surface levels can also be used to create a high degree of sculpting, giving off three-dimensional effects, which adds an extra 'wow' factor to finished products. There are no limitation to shapes and sizes for hand-tufted carpets; if you can dream it, we can create it! One of the most innovative programs we have at The Prestige Carpet has ability to provide customers with the option of creating custom, hand-tufted carpets.





STAIRS RUNNER

Custom Hand Tufted Carpet

If the stairs are open on the side, then the carpet must be bent in two ways: lengthwise over the front of the stair, and widthwise over the side. In these cases, there is the possibility for smiling to occur on the side of the stair. To avoid sid smiling, look for a high-quality Berber with larger loops, which can help to cover the space between the rows when bent sideways. Higher qualities of Berbers will have less space between the rows.





ROYAL MAJILIS CARPET





Our custom made hand tufted carpets are a combination of human imagination intergraded with state of art computer technology with unlimited design or quality required. We can offer a wide range of designs to choose from. which have been carefully fabricated taking into consideration the latest trends and fashion in the flooring industry We do not constrain our customers to standard specification and can go up to any complication if required as Wool or Silk of 15 lbs/ sq.yd.

PRIVATE VILLA MAJLIS
KHAWANEEJ DUBAI



HAND TUFTED-HOSPITALITY AREA RUGS

Custom Area Rugs | Custom Wall-to-Wall Carpet



Prestige Carpet Hand-Tufted Area Rugs are developed and produced for luxurious interior settings for both the hospitality and commercial markets. Our hand-tufted method offers limitless capabilities in terms of design, texture, colors, and sizes. We primarily use the hand-tufted method of construction to create loose-laid area rugs, but can also create wall-to-wall carpet as well. Most of our finished products contain wool or nylon, but there are a variety of other materials to choose from. Examples of these materials are Silk, Bamboo Silk, Viscose, and Solution Dyed Nylon. The process of hand-tufted production involves a hand operated tool known as a "tufting gun", which punches strands of fiber into a canvas stretched on a frame. Our highly skilled staff stencils in the design onto the canvas and carefully fills the design and pattern with the selected yarns and colors using the tufting gun. After completion, the rug is taken off of the frame and is ready for the application of a secondary backing. Finally, the custom hand-tufted product is finished with by adding a scrim backing to hold the fibers and edges in place. This production process happens to be very similar to machine-tufted carpet. However, since entirely created by hand, there are far fewer restrictions. We can produce large custom widths, custom pile heights, create texture effects such as carving, and most importantly, the design & color combinations are endless.

Hand-Tufted Carpets are best suited for luxurious settings, often specified by designers, architects, and end-users to add beauty and brilliance to floors. This type of construction is ideal for Hotel Lobbies & Guest Suites, Condominium Public Space, Corporate Office Lobbies, Country Clubs, Yachts, Theaters and more. Depending on the project scope and budget, we can modify the densities and pile heights for the appropriate setting. The hand-tufted method is a wonderful alternative to hand-knotted rugs because of the combination of durability and affordability.



Product Name: Custom Made Hand Tufted Carpet
Yarn: 100% New Zealand Wool
Construction: Cut Pile with Carving
Pile Weight: 2.6 kg/sqm
Total Weight: 4.4 kg/sqm
Thickness: 14mm
Carpet Size: Any Size
Baking: Cotton Mash
Foot Traffic: Heavy

Product Name: Custom Made Hand Tufted Carpet
Yarn: 100% New Zealand Wool
Construction: Cut Pile with Carving
Pile Weight: 3 kg/sqm
Total Weight: 4.8 kg/sqm
Thickness: 14mm
Carpet Size: Any Size
Baking: Cotton Mash
Foot Traffic: Heavy



Product Name: Custom-Made Hand Tufted Carpet
Yarn: 100% New Zealand Wool
Construction: Cut Pile with Carving
Pile Weight: 3.5 kg/sqm
Total Weight: 5.2 kg/sqm
Thickness: 16mm
Carpet Size: Any Size
Baking: Cotton Mash
Foot Traffic: Heavy

PLAZO VERSACE HOTEL
VIP LOUNGE

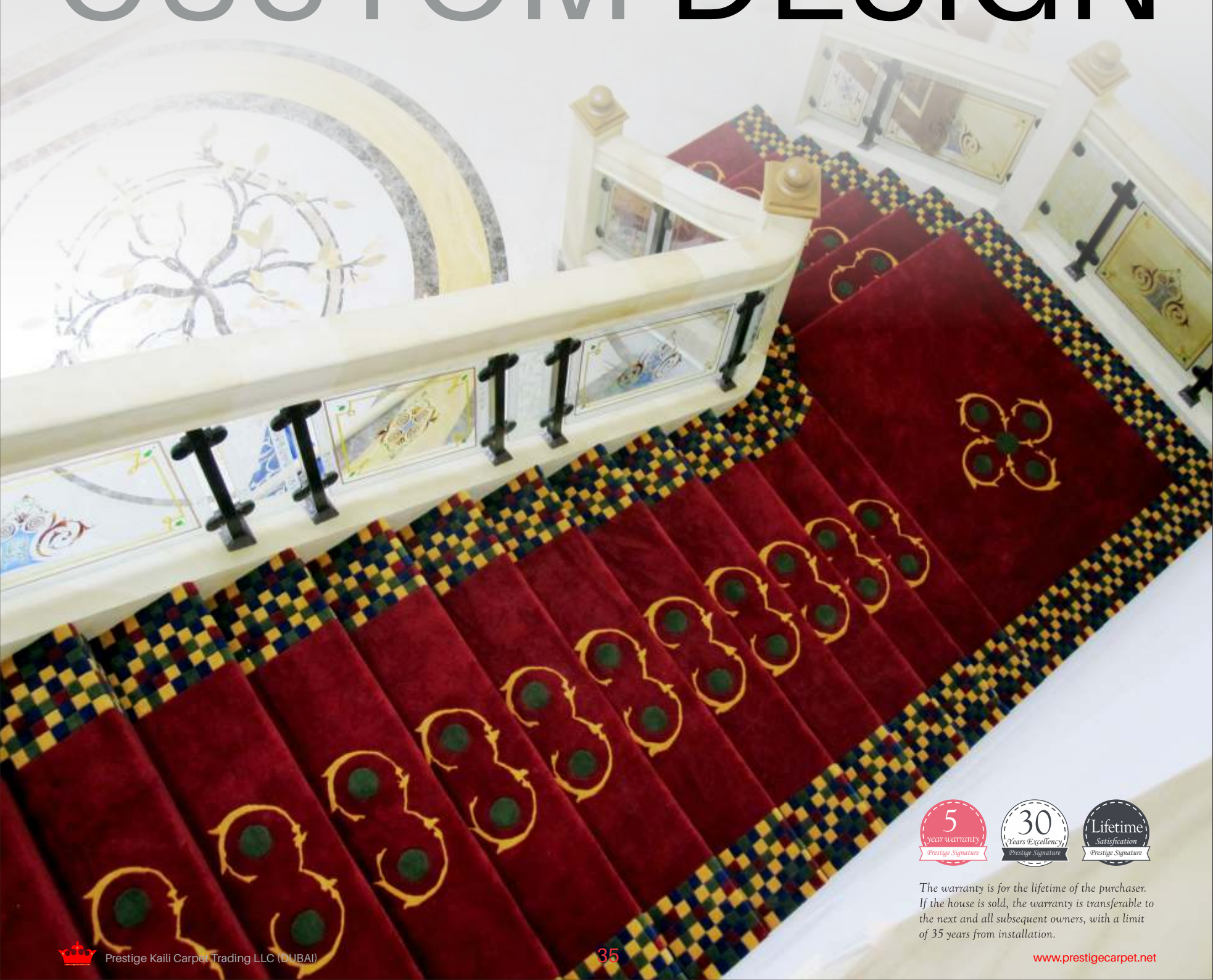
Product Name: Custom Made Hand Tufted Carpet
Yarn: 100% New Zealand Wool
Construction: Cut Pile with Carving
Pile Weight: 4.5 kg/sqm
Total Weight: 6.5 kg/sqm
Thickness: 18mm
Carpet Size: Any Size
Baking: Cotton Mash
Foot Traffic: Heavy



Product Name: Custom Made Hand Tufted Carpet
Yarn: 100% New Zealand Wool
Construction: Cut Pile with Carving
Pile Weight: 5.2 kg/sqm
Total Weight: 7.4 kg/sqm
Thickness: 14mm
Carpet Size: Any Size
Baking: Cotton Mash
Foot Traffic: Heavy

ALWAYS PRESTIGE

FOR OUTSTANDING QUALITY & CUSTOM DESIGN



The warranty is for the lifetime of the purchaser. If the house is sold, the warranty is transferable to the next and all subsequent owners, with a limit of 35 years from installation.

In one of the hallways,
the handcrafted carpet
made of New Zealand
wool, revisits Versace's
Barocco print.



Reasons to love Prestige Carpet

Prestige luxury carpets are the perfect solution for beautiful flooring that's easy to maintain and warm and quiet underfoot...



1. Strong and durable

1. Strong and durable Every Prestige custom made carpet is engineered from fine 100% wool with strong backing layers to combine extreme resilience and superb strength with beautiful design.



2. Easy to look after

2. Easy to look after Unlike delicate natural surfaces, Prestige Carpet takes minimum effort to maintain. Carpet are easy to clean, repair or replace, so you can enjoy beautiful flooring for years to come.



3. Quiet underfoot

3. Soundless underfoot The unique structure of Prestige Carpet helps to absorb sound to create a calm and peaceful space.



4. Feels soft and warm

4. Feels soft and warm Unlike hard stone or wood floors, Prestige Carpet feels soft and warm underfoot.



5. Superior looks

5. Superior looks Choose across hundreds of Modern, Classical and Abstract designs to recreate the latest flooring trends and bring a fabulous finish.



6. Unique design

6. Unique design Prestige Carpet offer an unrivalled choice of colours, design patterns and Ideas, so you can create a unique look for your home.



7. Long lasting

7. Long lasting Our hand-tufted Prestige flooring specialists will fit your new Carpet floor for you to give you years of beautiful flooring.



8. Suitable for underfloor heating

8. Suitable for underfloor heating Prestige Carpet is designed to work with underfloor heating systems, so it won't warp or crack like other flooring.

ACRYLIC CARPET



Hand-tufted carpets are among the most luxurious, creative and artistic in the world of carpet production. Several factors contribute to their luxuriousness, including artistic design, yarn content and fine detailing and finishing techniques. At Prestige Carpet we primarily use high quality 100% Japanese acrylic for our Hand Tufted carpets, which is excellent choice for residential areas . These yarns are finer and are used for more intricate design detail including petit point loop and low tight cut-pile constructions, making for an extremely smooth,

Multi level cut & Loop Pile Carpet





100% ACRYLIC



PRIVATE MAJLIS (RAK)



100% ACRYLIC



PRIVATE MAJLIS (AL-AIN)



Bamboo Silk






Revolution
of tufting
and
coloring



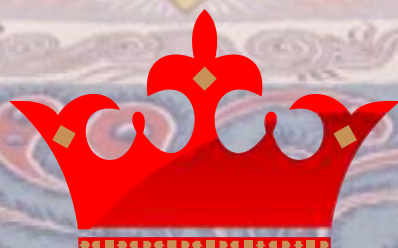




When there is creativity, everything goes like silk. Nature is brilliant engineer and builder elegance is always in style of human. Bamboo silk fiber has natural sheen and softness that feels and drapes like silk. The right carpet can dramatically improve a rooms overall appearance by connecting the furniture and accessories into a cohesive style.



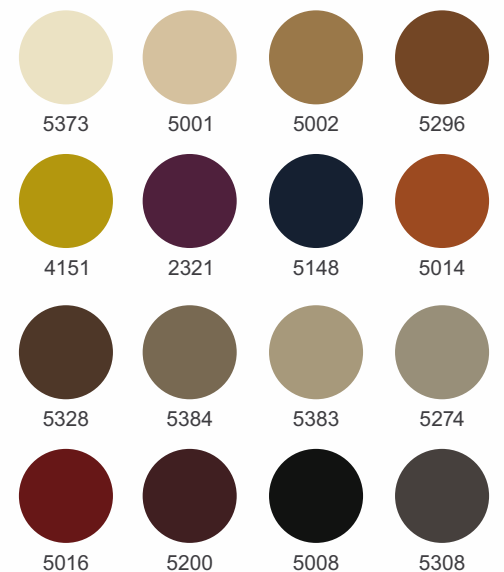
MIXING OF WOOL & VISCOSE



AXMINSTER CARPET



Prestige Carpet starts Axminster Carpet since 1989, we continues the rich tradition of quality carpet, plus using high quality 80% virgin Wool, 20% Nylon blended to achi eve qu ality carp et, with its elf s uperior cons truction and high standard i n manufactu re, our carpet add a sense of luxury and sophistication associated with woven broadloom to the fl oor of any room. A preferred choice of specifiers for prestige and complex hospitality installations,th e wool-rich Axmins ter carpets , with their superior performance characteristics, are ideal for interiors ranging from luxurious hotels and res orts to more practical installations in public buildings, corporate headquarters and transport facilities.



Walk of Fame

Axminster 7 row

80% Wool, 20% Nylon



Axminster 7 row



The
Green
signature
of Prestige Carpets

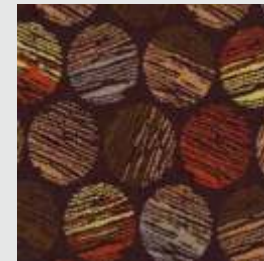
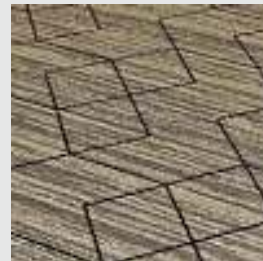
Pile composition	80% WO 20% PA	Pitch per inch/m	27.56 per DM	Rows per inch/m	27.56 per DM
Effective pile height	± 6.8 mm	Larger Width	± 400 cm	Number of knots/sqm	± 76176
Total weight/sqm	± 2328 gr	Total height	± 9.5 mm	Pile weight/sqm	± 1068 gr/m²
ISO 354 Sound absorption a _s	± 0.25 1000 Hz	ISO 11654 Sound absorption a _w	± 0.25	DIN 52612 Thermal retention	± 0.11 m²/kW
ISO 6356 Teil 2: Permanently antistatic	< 2 kV	ISO 6356 Teil 6: Surface resistance RoT	≤ 10¹¹ Ω	ISO 10965 Teil 6: Vertical resistance RdT	≤ 10¹⁰ Ω
ISO 105 E01 Waterfastness change in colour	≥ 4-5	ISO 105 E01 Waterfastness staining	≥ 3-4	ISO 105 X12 Rubbingfastness dry	≥ 4
ISO 140/8 Impact sound insulation	± 26 dB	EN 13501-1 Fire behaviour	B_{f1}-s1	EN 1307 Classification	CLASS 33 COMMERCIAL HEAVY
TOG rating	± 1,1	ISO 105 B02 Lightfastness	≥ 5	ISO 105 X12 Rubbingfastness wet	≥ 3-4

Axminster 8 row

80% Wool, 20% Nylon



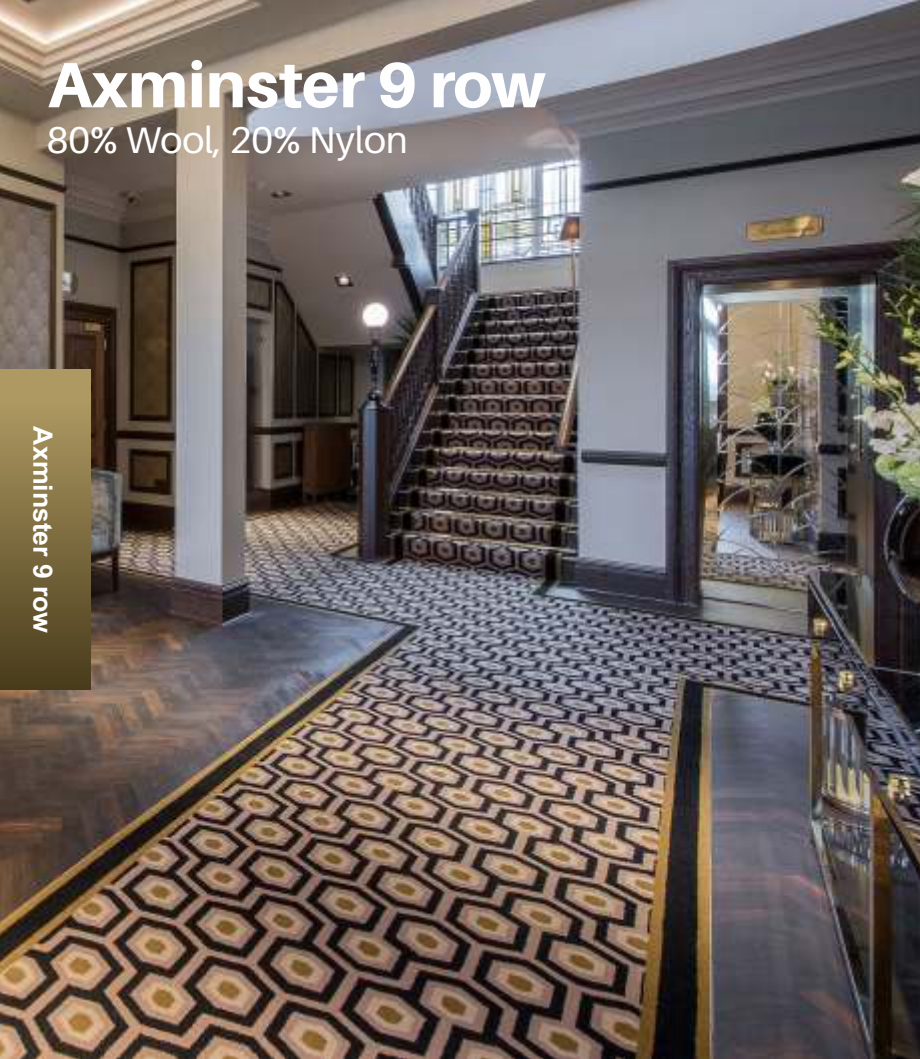
Axminster 8 row



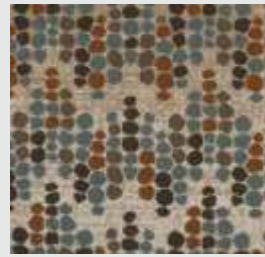
Backing Materials	Weft Jute/P.P. Warp P.P./ Polyester /Poly Cotton	Backing Coating	Non-fray latex	Pile Composition	80% Wool 20% Nylon ±3%
Pitch	27.56 per DM 7 per inch	Rows	31.50 per DM 8 per inch	Pile Height	7.60 mm (± 1.00 mm) 0.29 inch
Total Pile Weight	1322 g/m² (+15%/-10%) 39.00 oz/yd² (+15%/-10%)	Total Carpet Weight	2482 g/m² (+/-15%) 73.20 oz/yd² (+/-15%) <small>Subject to variation depending on backing materials Used.</small>	Installation method	Glue-down or Stretching
Yarn Count 2ply	R660/2 Tex (±5%) 2/47s (±5%)	Loom sizes	4 meter 13.2	Suitability	Medium Contract
ISO 354 Sound absorption a _s	± 0,27 1000 Hz	ISO 11654 Sound absorption a _w	± 0,25	DIN 52612 Thermal retention	± 0,11 m²/kW
ISO 6356 Teil 2: Permanently antistatic	< 2 kV	ISO 6356 Teil 6: Surface resistance RoT	≤ 10¹¹Ω	ISO 10965 Teil 6: Vertical resistance RdT	≤ 10¹⁰ Ω
ISO 105 E01 Waterfastness change in colour	≥ 4-5	ISO 105 E01 Waterfastness staining	≥ 3-4	ISO 105 X12 Rubbingfastness dry	≥ 4
TOG rating	± 1,1	ISO 105 B02 Lightfastness	≥ 5	ISO 105 X12 Rubbingfastness wet	≥ 3-4

Axminster 9 row

80% Wool, 20% Nylon



Axminster 9 row



The
Green
signature
of Prestige Carpets

Pile composition	80% WO 20% PA	Pitch per inch/m	27.56 per DM	Rows per inch/m	27.56 per DM
Effective pile height	± 6.8 mm	Larger Width	± 400 cm	Number of knots/sqm	± 76176
Total weight/sqm	± 2597 gr	Total height	± 9.5 mm	Pile weight/sqm	± 1487 gr/m²
ISO 354 Sound absorption a _s	± 0.25 1000 Hz	ISO 11654 Sound absorption a _w	± 0.25	DIN 52612 Thermal retention	± 0.11 m²/kW
ISO 354 Sound absorption a _s	± 0.26 1000 Hz	ISO 11654 Sound absorption a _w	± 0.20	DIN 52612 Thermal retention	± 0.11 m²/kW
ISO 6356 Teil 2: Permanently antistatic	< 2 kV	ISO 6356 Teil 6: Surface resistance RoT	≤ 10¹¹ Ω	ISO 10965 Teil 6: Vertical resistance RdT	≤ 10¹⁰ Ω
ISO 105 E01 Waterfastness change in color	≥ 4-5	ISO 105 E01 Waterfastness staining	≥ 3-4	ISO 105 X12 Rubbingfastness dry	≥ 4
TOG rating	± 1,1	ISO 105 B02 Lightfastness	≥ 5	ISO 105 X12 Rubbingfastness wet	≥ 3-4

Axminster 10 row

80% Wool, 20% Nylon



Axminster 10 row

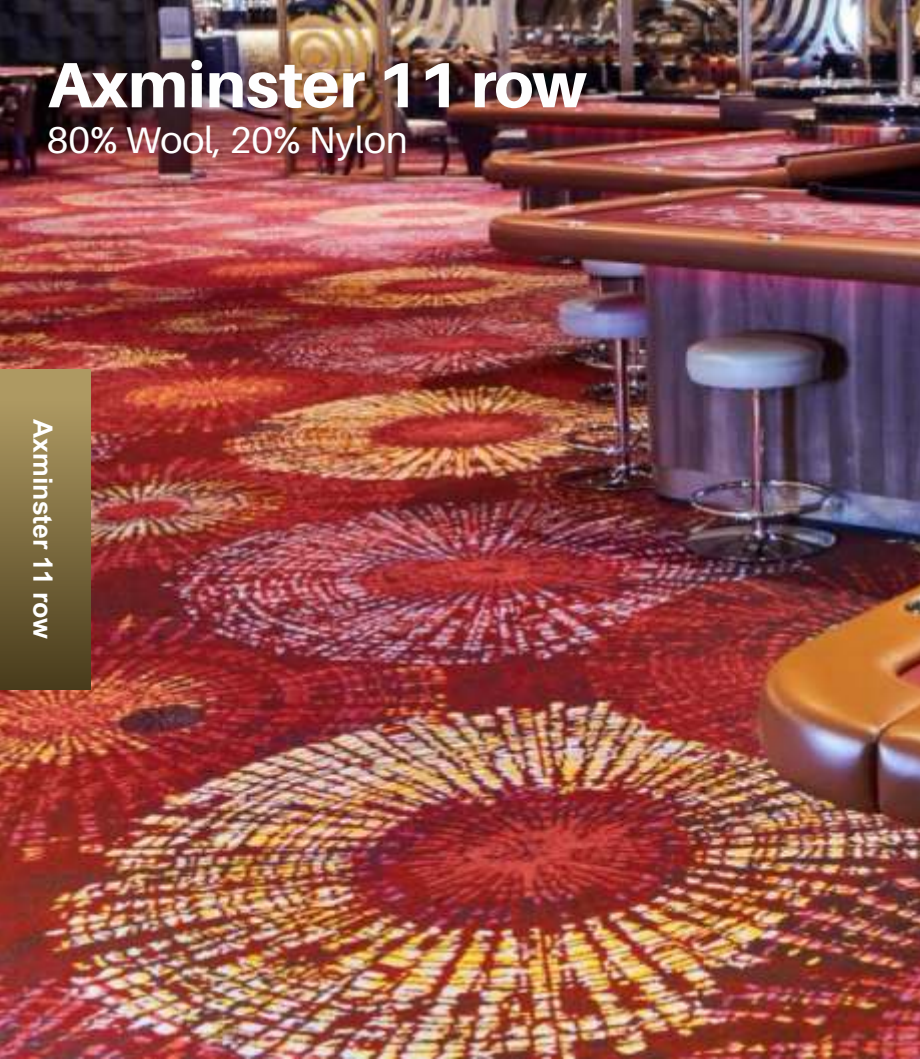


Pile composition	80% WO 20% PA	Pitch per inch/m	27.56 per DM	Rows per inch/m	39.37 per DM
Effective pile height	± 7.6 mm	Larger Width	± 400 cm	Number of knots/sqm	± 76176
Total weight/sqm	± 2685 gr	Total height	± 9.5 mm	Pile weight/sqm	± 1652 gr/m²
ISO 354 Sound absorption a _s	± 0.25 1000 Hz	ISO 11654 Sound absorption a _w	± 0.25	DIN 52612 Thermal retention	± 0.11 m²/kW
ISO 354 Sound absorption a _s	± 0.26 1000 Hz	ISO 11654 Sound absorption a _w	± 0.20	DIN 52612 Thermal retention	± 0.11 m²/kW
ISO 6356 Teil 2: Permanently antistatic	< 2 kV	ISO 6356 Teil 6: Surface resistance RoT	≤ 10¹¹ Ω	ISO 10965 Teil 6: Vertical resistance RdT	≤ 10¹⁰ Ω
ISO 105 E01 Waterfastness change in colour	≥ 4-5	ISO 105 E01 Waterfastness staining	≥ 3-4	ISO 105 X12 Rubbingfastness dry	≥ 4
TOG rating	± 1,1	ISO 105 B02 Lightfastness	≥ 5	ISO 105 X12 Rubbingfastness wet	≥ 3-4

Axminster 11 row

80% Wool, 20% Nylon

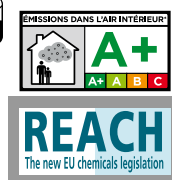
Axminster 11 row



The
Green
signature
of Prestige Carpets

Pile composition	80% WO 20% PA	Pitch per inch/m	27.56 per DM	Rows per inch/m	43.31 per DM
Effective pile height	± 7.60 mm	Larger Width	± 400 cm	Number of knots/sqm	± 76176
Total weight/sqm	± 2718 gr	Total height	± 9.5 mm	Pile weight/sqm	± 1818 gr/m²
ISO 354 Sound absorption a _s	± 0.25 1000 Hz	ISO 11654 Sound absorption a _w	± 0.25	DIN 52612 Thermal retention	± 0.11 m²/kW
ISO 354 Sound absorption a _s	± 0.26 1000 Hz	ISO 11654 Sound absorption a _w	± 0.20	DIN 52612 Thermal retention	± 0.11 m²/kW
ISO 6356 Teil 2: Permanently antistatic	< 2 kV	ISO 6356 Teil 6: Surface resistance RoT	≤ 10¹¹ Ω	ISO 10965 Teil 6: Vertical resistance RdT	≤ 10¹⁰ Ω
ISO 105 E01 Water fastness change in color	≥ 4-5	ISO 105 E01 Waterfastness staining	≥ 3-4	ISO 105 X12 Rubbingfastness dry	≥ 4
TOG rating	± 1,1	ISO 105 B02 Lightfastness	≥ 5	ISO 105 X12 Rubbingfastness wet	≥ 3-4

(±) These details are approximate. Complete specification details and associated certificates together with tolerances applying to the above can be provided upon request. We reserve the right to improve technical specifications without prior notice. Due to method of manufacture perfect pattern and or colour matching cannot be guaranteed. In cut-pile carpeting, in rare cases, shading/ pile reversal may occur without affecting its fitness for use. Shading/pile reversal can not be considered as a manufacturing or a material defect and will not affect the durability of the carpet.



TOP TECHNOLOGY

- 4 m wide
- 2/3-ply yarn
- Hi-speed European weaving machine
- 80% wool-20% nylon

EXTENDED COLOUR RANGE

- 16 standard colours
- Up to 660 shades in 'Pom Box'
- Up to 2500 shades in dyelab
- Personal shades possible (RAL, NCS, Pantone, ...)

ULTRA FLEXIBILITY

- Quick response to customer ideas (3 days design / 7 days sample time)
- Standard collection
- Ultra flexibility from idea sketch to 'Kibby-sample' to mock-up room

CUSTOM DESIGN

- Available from 7 to 12 rows / inch
- 25,000 archived designs
- Custom designs possible

MACINE MADE CARPET

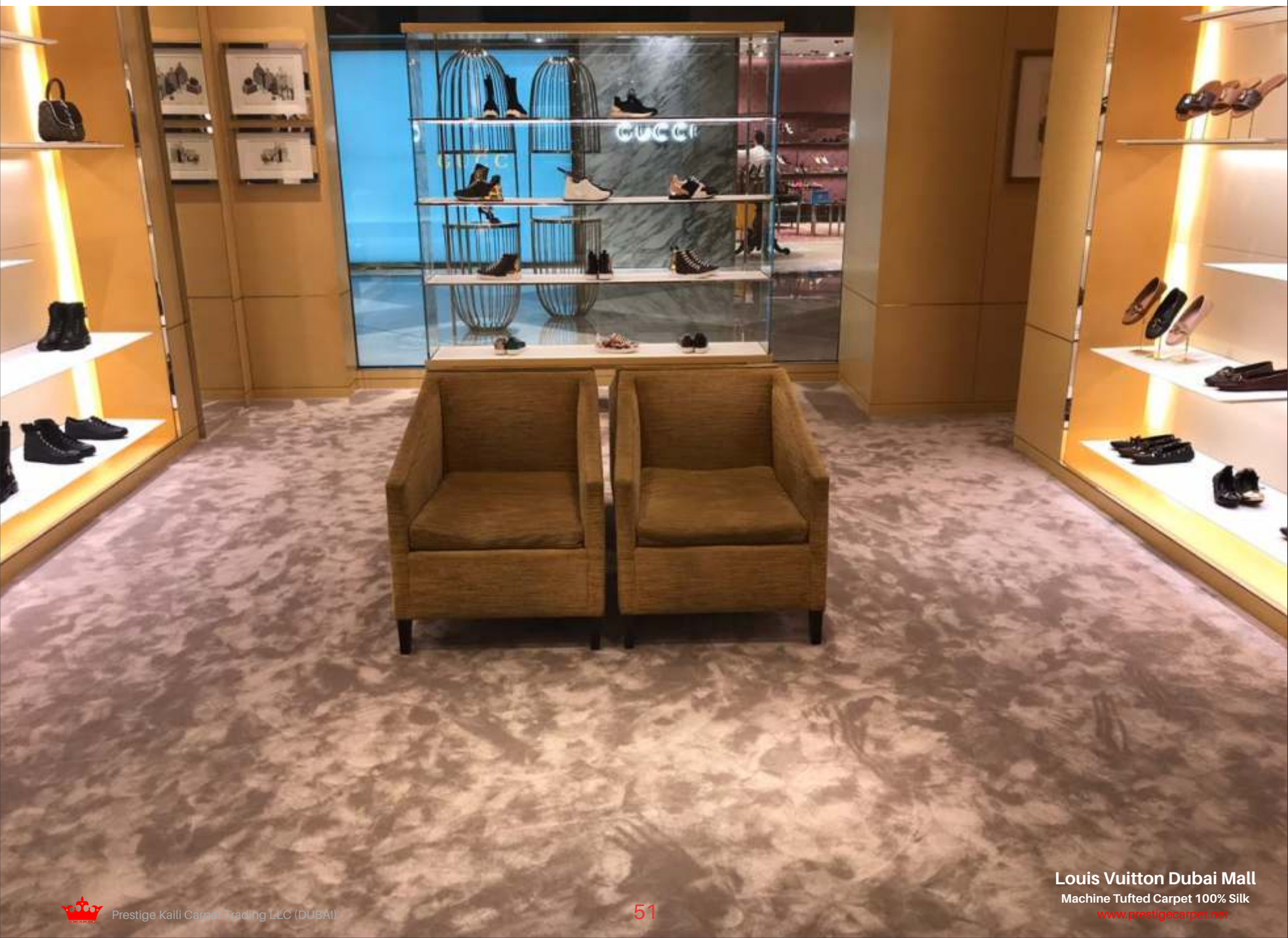
Product Name: Custom Machine Tufted Carpet
Yarn: 100% Nylon, 80% Wool, 20% Nylon
Construction: Cut & Loop Pile /Carving Possible
Pile Weight: 1200* g/sqm
Total Weight: 2100* g/sqm
Thickness: 10-14mm
Carpet Size: Any Size
Baking: Action Back
Foot Traffic: Normal & Heavy



Louis Vuitton Dubai Mall
Machine Tufted Carpet 100% Nylon



Emirates NBD-Nad Al Sheba Dubai
Machine Tufted Carpet 100% Nylon



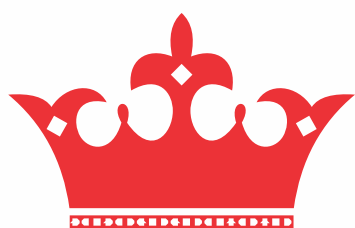
Louis Vuitton Dubai Mall
Machine Tufted Carpet 100% Silk
www.prestigecarpet.net



Machine Tufted Carpet
For Hotel Guest Room



Machine Tufted Carpet
For Hotel Guest Room



PRESTIGE MAJOR PROJECTS





HOTEL CARPET

Custom Hand Tufted &
Axminster Carpet





IPIC TOWER - ABUDHABI



ABUDHABI GOLF CLUB



SOFITEL HOTEL ABUDHAIB

FAIRMONT

DIBBA - FUJAIRAH



GUEST BEDROOM



PARTY HALL



GUEST BEDROOM



LOBY



MEETING HALL



GUEST BEDROOM



PLAZZO VERSACE

DUBAI



GUEST BEDROOM



PARTY HALL



GUEST BEDROOM



PRE FUNCTION



MEETING HALL



APARTMENT CORRIDOR



SHANGHAI TOWER
TALLEST BUILDING IN CHINA



SOFITEL DUBAI RESORTS AND SPA
UNITED ARAB EMIRATES



INTER CONTINENTAL HOTEL JARKATA
Tallest Building in Tsim Sha Tsui, Hongkong



HILTON CAPITAL GRAND

ABU DHABI

Hilton



LAPITA, DUBAI PARKS AND RESORT

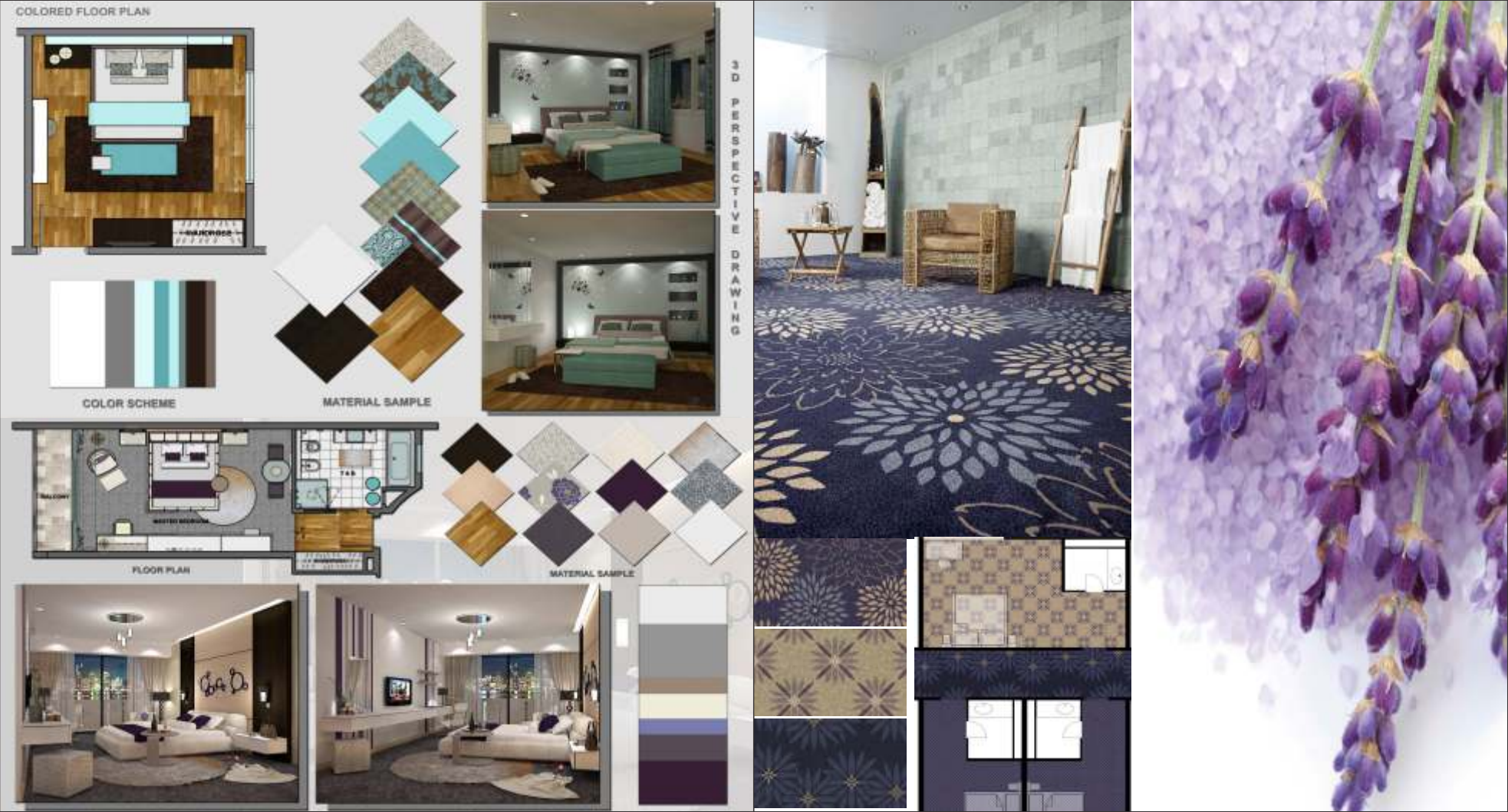
UNITED ARAB EMIRATES



QASR AL SULTAN HOTEL

DUBAI





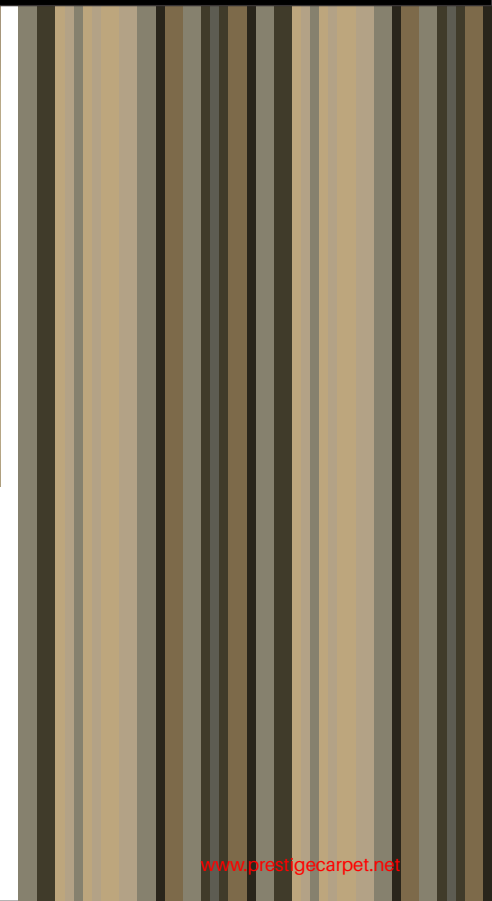
DESIGN CONCEPT TO EXECUTATION



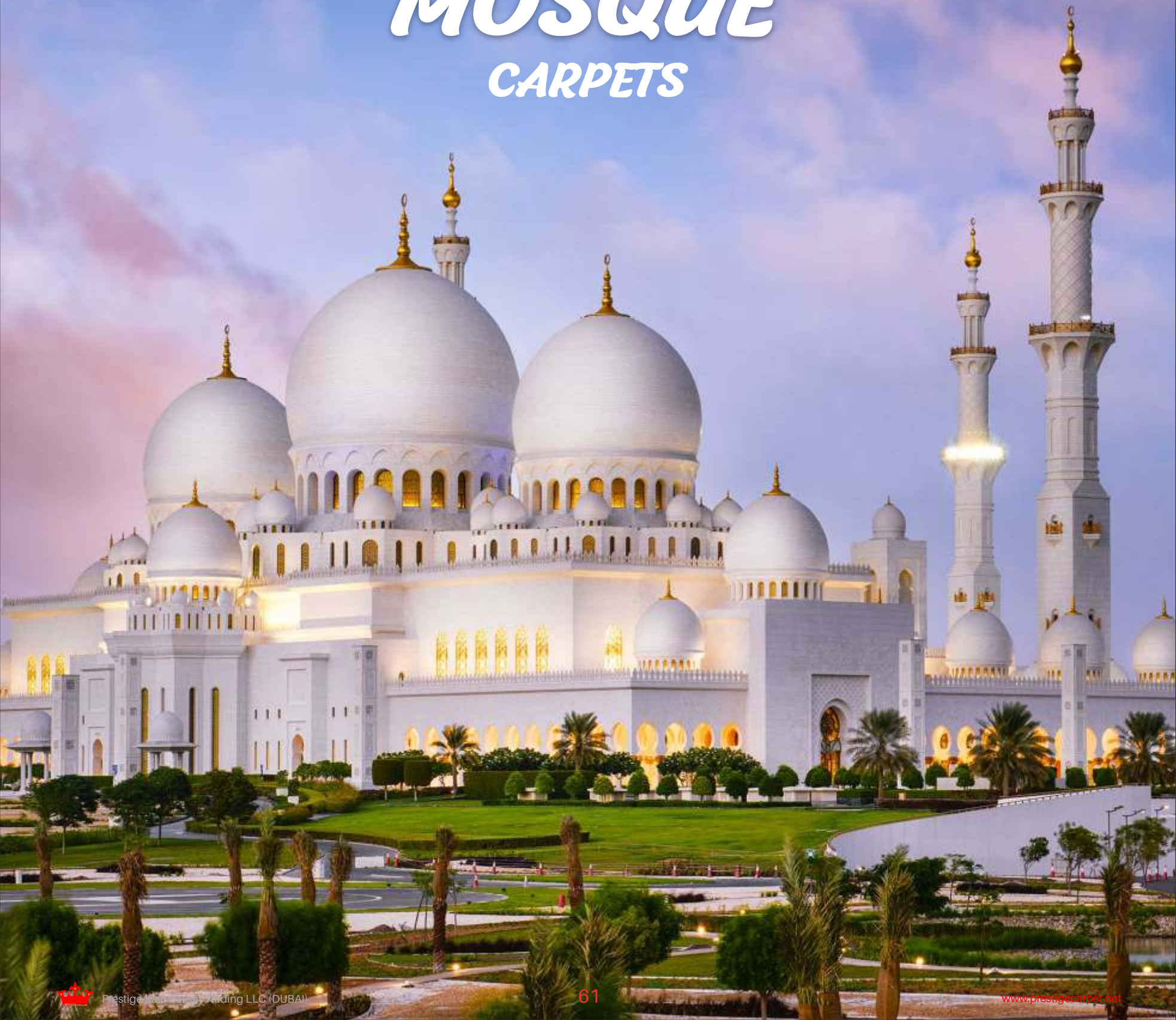
3D Perspective Drawing



Colour Scheme



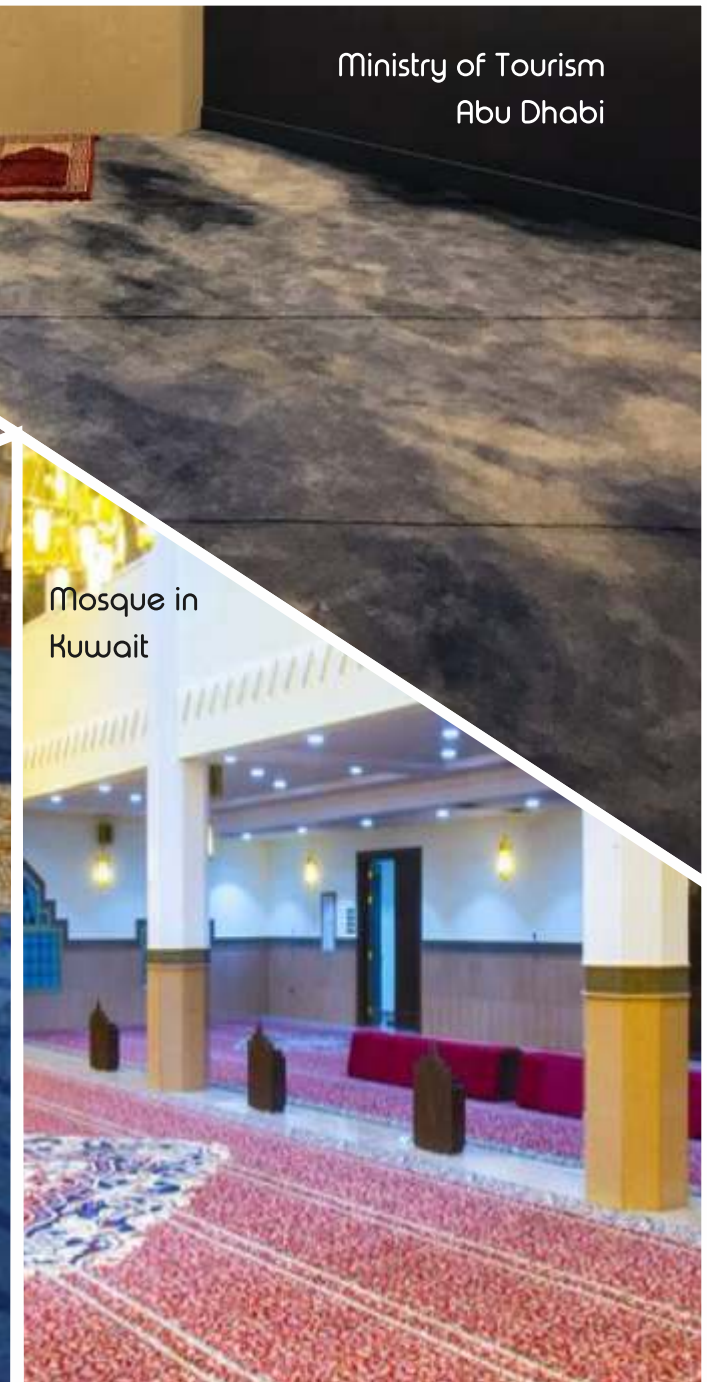
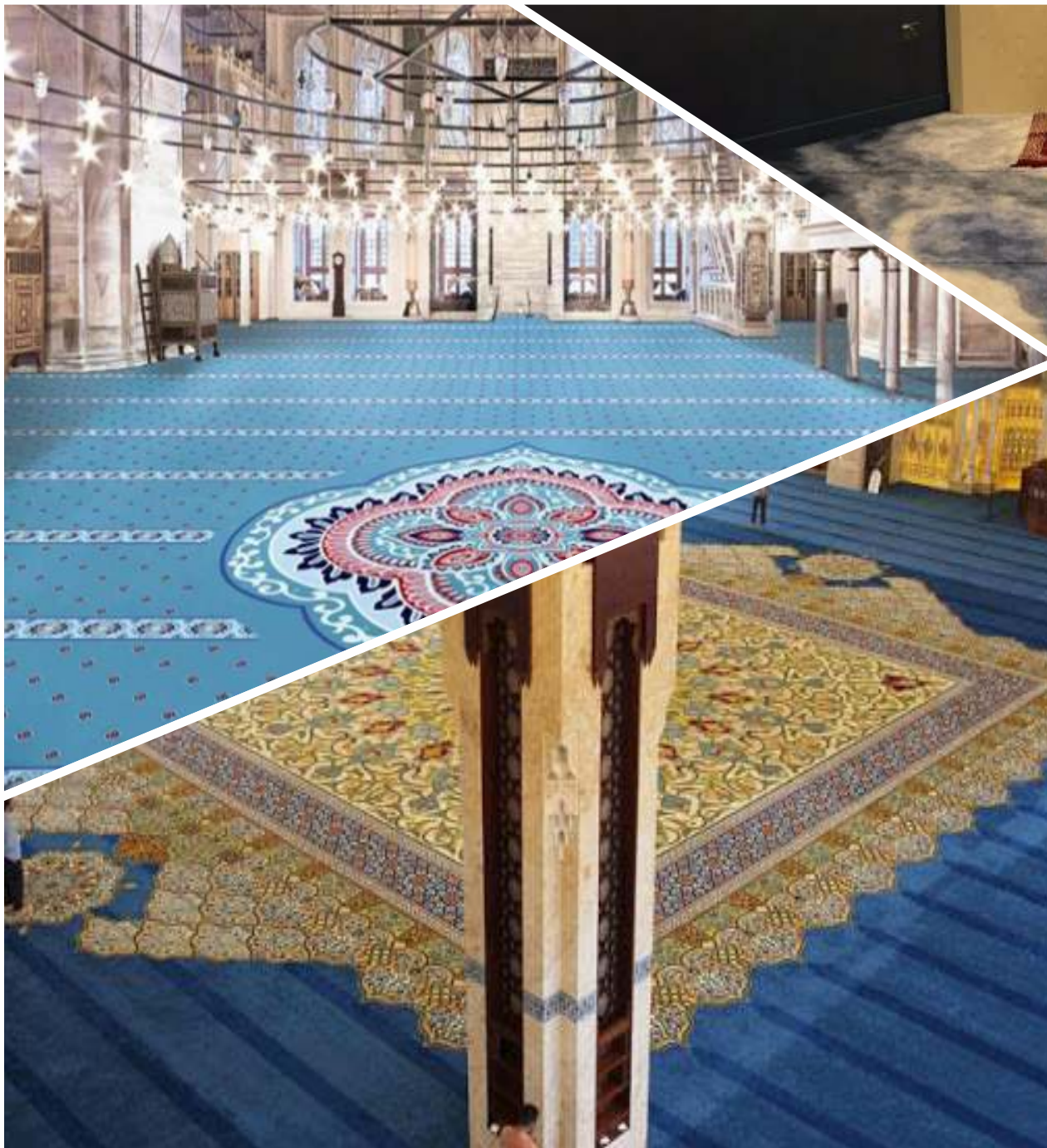
MOSQUE CARPETS





Product Name: Custom Made Hand Tufted Carpet
Yarn: 100% Acrylic
Construction: Cut Pile with Carving
Pile Weight: 2.6 kg/sqm
Total Weight: 4.4 kg/sqm
Thickness: 14mm
Carpet Size: Any Size

Project: Mosque in RAK



Mosque in
Kuwait



Sahara Center Sharjah



Mosque in Al Ain

OUR CUSTOMERS



المسج الملكية للمساجد
Royal Touch Carpet



Palaces & Royal Residences

Ruler's Palaces, Umm Al Quwain
Nakheel palace (Aweer)
Tawella Palace Abu Dhabi
Dadna Palace Fujairah
Zabeel Palace Dubai
Beach Palace
Morocco Palace - Casablanca
Governor House, - Madinah Munawara, Saudi Arabia
H.R.H. Kings Palace - Riyadh, Saudi Arabia
H.H. Sh. Khalifa's Palace - Abu Dhabi
H.H. Shaikha Aalia Bint Jabar Al Sabbah - Kuwait
Farm House H.H. Sh. Rashid Al Muallah - UAQ
H.H. Sh. Hamdan Bin Muhammad
H.H. Sh. Abdullah Al Thani London Residence
H.H. Sh. Ahmed Residence - Al Lahbab, Dubai
Sh. Ahmed Al Thani - Qatar
Shaikha Maryam - Qatar
Shaikha Hassa Villa - Dubai
H.H. Sh. Hamdan Palace - Zabeel, Dubai
Dadnah Palace - Dubai
Zabeel Palace - Dubai
H.H. Sheikh Bin Juma Al Maktoun Residence - Dubai
Tawala Palace - Abu Dhabi
H.H. Sh. Hamdan Bin Muhammad Residence - Abu Dhabi
Sheikha Sheikha Palace Zabeel - Dubai
H.H. Sheikha Maryam Palace Umm Hurair - Dubai
H.H. Sh. Maktoum Palace Al Awair - Dubai
H.H. Sh. Abdul Aziz Al Muallah Palace - UAQ
Residences of Primeminister of AzerBaijan
H.H. Sh. Faisal Al Muallah Residence - UAQ
H.H. Sh. Maktoum Al Muallah UAQ
H.H. Ruler's Palace (Sh. Rashid Al Muallah) - UAQ
H.H. Sh. Ibrahim Al Muallah - UAQ
H.H. Sh. Abdul Aziz Al Naimi - Ajman
H.H. Sh. Khalid Bin Abdullah Al Qasmi - Sharjah
H.H. Sh. Rashid Bin Sayed Al Maktoum, Zabeel Palace
H.H. Sh. Saqar Al Qasmi - RAK
El Wareek Palace, Doha - Qatar
Prime Minister's Office (Presidential Palace) - Abu Dhabi
H.H. Sh. Abdullah Al Muallah Palace - UAQ
H.H. Sh. Ali Al Muallah Palace - UAQ
H.H. Sh. Badar Al Muallah - UAQ
Paradise Palace (Morocco)

Hotels and Furnished Apartments

Hilton Abu Dhabi
Hayat Regency Dubai
World Trade Centre Residences Dubai
Crown Plaza Abu Dhabi
Crown Plaza Dubai
Golden Tulip Dubai
Traders Hotel - Dubai
Al Sharq Village & Spa - Qatar
Emirates Tower Office
(H.H. Sh. Rashid Bin Mohd Al Maktoum)
Golden Tulip Al Khobar, Saudi Arabia
Military Furnished Appartments Abu Dhabi
Ritz Carlton - Qatar
Panorama Hotel - Dubai
Qatar National Hotel - Qatar
Intercontinentel Festival City
Address Hotel downtown
Mellinium Hotel Kurdistan
Hilton Garden Inn Doha
Intercontinentel Hotel (Kalba)
Orchird Restaurant
Hotel Appartments inAden Yamen
Novotel Dubai
Andulas Dubai
Dubai Private Hotel - Dubai
Al Reem Resort
Hilton RAK
Ricksas Hotel, Antalia, (Dosan Hill) -Turkey
Millennium Hotel (Oman)
Sofitel Palm Jumeriah (Dubai)
Gloria Hotel (Dubai)
Address Hotel (Dubai)
G olden Tulip (RAK)
Corniche Hotel Jeddah, Saudi Arabia
Pullman Hotel Dubai
Marriott Hotel Bahrain
Meydan Hotel (Standard Suit Carpets) - Dubai
Hotels / Furnished Apartments
Versace Plazzo Hotel (Dubai)
Fairmont Hotel (Ajman)
Werwick Hotel (Dubai)
Double Tree Hilton (RAK)
Sofitel Hotel (Bahrain)
Fairmont Hotel(Fujeria-Dibba)



Projects

Yachts/Boats

Al Nabooda Yacht Dubai
Boat Sh. Hashim Abdullah Hashim - Jeddah, Saudi Arabia
Yacht H.H. Sh. Abdullah Al Muallah, UAQ
Royal Yacht H.H. Sh. Mansour Bin Zaid Abu Dhabi
Royal Yacht Ruler of UAQ
Yacht H.H. Sh. Ali Al Muallah, UAQ
Boat House H.H. The Ruler of UAQ

Cinemas/ Theaters Public Facilities

Theatre in Ghantoot Palace, Abu Dhabi
Arab African International Bank, Dubai
Convention Centre (Adyton Art), Dubai
Al Arabia News Channel, Dubai Media City, Dubai
Marina Mall Ext. Cinmar Design), Abu Dhabi
Emirates Airlines (First/Business Class Check In Counters), Dubai
Zabeel Sports Club
Shooting Ranges Al Lisaili (H.H. Sh. Mohd), Dubai
Airport Runners (VIP), Abu Dhabi
Noor Islamic Bank, Dubai
Camel Trek Lisaili, Dubai
Itihand Airways - (Floor Expo) Abu Dhabi
Gulf Air (First/Business Class Check in Counters), Bahrain
Shooting Club Sharjah
Mall of Emirates Trade Centre ATP Dubai
ASTECO, Dubai

Private Villas/Residences/Sitting Rooms

Mr. Hussain Bin A. Hamran, Jeddah, Saudi Arabia
Marwa Villa, Bahrain
Mr. Muhammad Al Kait, RAK
Mr. Muhammad Abdul Rahman, Al Tawar Villa, Dubai
Mr. Yacoub Al Khawari, Doha, Qatar
Hussam Villa, Jeddah, Saudi Arabia

Mosque

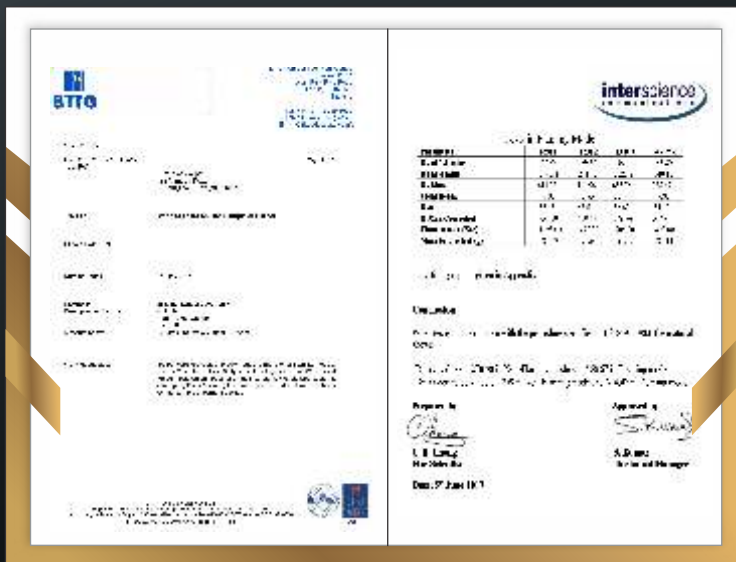
Al Hamdia Mosque - Ajman
Shia Mosque
(Jaafria Endowment Board) Bur Dubai
Al Jadaf Mosque - Jadaf Dubai
Maliha Mosque-
Sahara Mall-prayer hall
IPIC Head Quarter Male & Female Mosque
Abudhabi)
Mahawi Mosque
Al Kareem Mosque (Dubai)
Al Khair Mosque (Dubai)
Al Ghafoor Mosque (Dubai)
Al Aziz Mosque (Dubai)
Al Rehman Mosque (Dubai)
Military Mosque (Al Ain)
Khalifa Mosque No 42 (Abudhabi)
Maliha Mosque (Abudhabi)
Khalifa Mosque 38 (Abudhabi)
Al Tufeeque Mosque (Dubai Marina)
Khalifa Mosque 39 (Abudhabi)
Khalifa Mosque 39 (Abudhabi)
Majid Al Futtain Deira
Global Village Mosque Dubai
Al Wahab Mosque Dubai
Main Boulevard Mosque - Ajman

Government Departments

Ministry of Municipal and Rural Affairs
(Saudi Arabia)
Military Residences Abu Dhabi
H.H Shk Sultan Private Office (Dubai)
H.H Shk Saleh Office (Fujeriah)



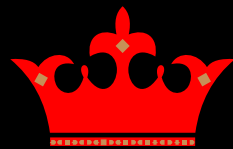
Certificates



OUR MARKET



over 30 years We have accumulated more than 100 long-term costumers



Prestige Kaili Carpet Trading LLC

Dubai: Office # 1116, Churchill Tower, Business Bay, Dubai-UAE
Factory Address: No.5 Qiaotou, Changzhou, Jiangsu, P.R China

Tel: +971 4 3436888

Email: info@prestigecarpet.net

Website: www.prestigecarpet.net

